

# MIRAGE SYSTEM

# CONTENT

**PRODUCT DESCRIPTION ..... 4**

**3D DRAWINGS  
AND ILLUSTRATIONS ..... 10**

- **CORE-DRILLED CONCRETE .....10**
- **TOP MOUNT TO CONCRETE ..... 12**
- **SIDE MOUNT TO CONCRETE .....14**
- **TOP MOUNT TO STEEL ..... 16**
- **SIDE MOUNT TO STEEL .....18**
- **GLASS .....20**
- **GLASS (ROD & PISTON) .....22**
- **CABLE .....24**

# CONTENT

- WIRE MESH .....26
- ROD (HORIZONTAL) .....28
- ROD (VERTICAL).....30
- PERF-PANEL .....32

AUXILLARY RAILINGS ..... 34

LED RAILINGS ..... 35

# PRODUCT DESCRIPTION

The Livers Bronze Mirage Railing System is designed to cater to your unique preferences and project requirements offering a variety of customizable options. Choose from a selection of materials including glass, perforated metal, woven wire, cable, vertical pickets, and horizontal rods to create a railing system that seamlessly integrates with your design vision. Its adaptability ensures that it not only complements your design but enhances it, making it the perfect choice for your commercial project.



CONTENT

4



[www.liversbronze.com](http://www.liversbronze.com)



[Railings@LiversBronze.com](mailto:Railings@LiversBronze.com)



816-300-2828



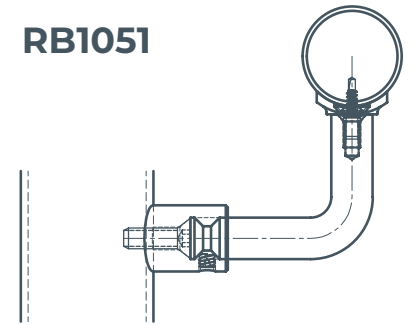
# PRODUCT DESCRIPTION

## BRACKETS

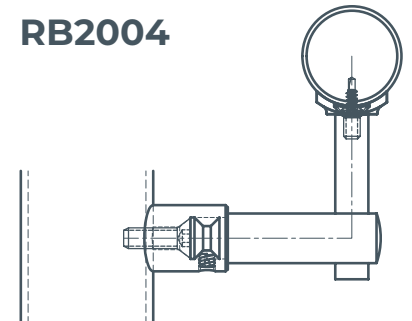
FOR HAND RAIL  
ON ROUND AND SQUARE POSTS



**RB1051**



**RB2004**



[www.liversbronze.com](http://www.liversbronze.com)



[Railings@LiversBronze.com](mailto:Railings@LiversBronze.com)



816-300-2828

CONTENT

5

Austin, Texas

# Mirage Railing

## PRODUCT DESCRIPTION



CONTENT

6

**LIVERS**  
**BRONZE**

# PRODUCT DESCRIPTION

	MATERIAL	FINISH	SIZE AND SPACING
POST	Stainless steel 2" OD post Stainless steel 2" SQ post	#4 or #6 Satin, #7 Polished, Powder Coated or Blackened	2" OD Tube – 48" o.c. 2" x 2" Tube – 48" o.c. Mounted to embedded steel, steel stair tubes/channels and concrete
INFILL	Laminated / Tempered Glass	Clear, Tinted, Frosted, Frit and Colored Interlayers	7/16" laminated glass or 9/16" laminated glass. Glass laminated using .060 PVB or .060 SGP interlayer
	Perforated Metal Woven Wire	#4 or #6 Satin, #7 Polished, Powder Coated or Blackened Frames for Perforated Metal and Woven Wire are non-directional satin	Panels are sized to fit between posts.
	Horizontal Rods		Horizontal Rods are continuous mounted to face of posts.
	Vertical Pickets	#4 or #6 Satin, #7 Polished, Powder Coated or Blackened	1" OD horizontals mount to posts with 1/2" OD vertical pickets between the horizontals
	Stainless Steel Cable	Stainless steel cables are mill finish	3/16" stainless steel cables pass through post centerlines



# PRODUCT DESCRIPTION

	MATERIAL	FINISH	SIZE AND SPACING
TOP RAILING	Stainless Steel 1.5" or 2" round and square tubes. Stainless steel rectangular tubes or bars.	#4 or #6 Satin, #7 Polished, Powder Coated or Blackened	Continuous Railing
	Bronze 2" Diameter Bronze extruded shapes	#4 Satin, #7 Polished, Antique finish, all with clear lacquer	
	Hardwood top railings are available in all species of wood.	Sanded only – final staining and finishing is not included	Round, square and complex profiles are available.

CONTENT

8



[www.liversbronze.com](http://www.liversbronze.com)



[Railings@LiversBronze.com](mailto:Railings@LiversBronze.com)



816-300-2828

# PRODUCT DESCRIPTION

	MATERIAL	FINISH	SIZE AND SPACING
HAND RAIL	Stainless Steel Tube	#4 or #6 straight grain, #6 circular grain, #7 polished, Powder Coat, Blackened	1.5" diameter tube, 2" diameter tube 1.5" diameter tube with linear LED lighting 1.5" diameter with Individual LED Puck lighting Square tubes, rectangular tubes, oval tubes are available
	Stainless Steel Bar, Steel Bar	#4 or #6 Satin, #7 Polished, Powder Coated or Blackened	Stainless Steel and Steel Bars in all available sizes
	Bronze	#4 Satin / Lacquered Polished / Lacquered Antique / Lacquered	Bronze round tubes, square tubes, rectangular tubes, bars and traditional shaped bronze extrusions. LED bronze railings are available
	Hardwood hand railings are available in all species of wood.	Sanded only – final staining and finishing is not included	Round, square and complex profiles are available. Handrail diameter minimum is 1.75" unless a metal sub-railing is provided

CONTENT



[www.liversbronze.com](http://www.liversbronze.com)



[Railings@LiversBronze.com](mailto:Railings@LiversBronze.com)



816-300-2828

9

Mirage Railing

CORE-DRILLED  
CONCRETE

Merriam, KS



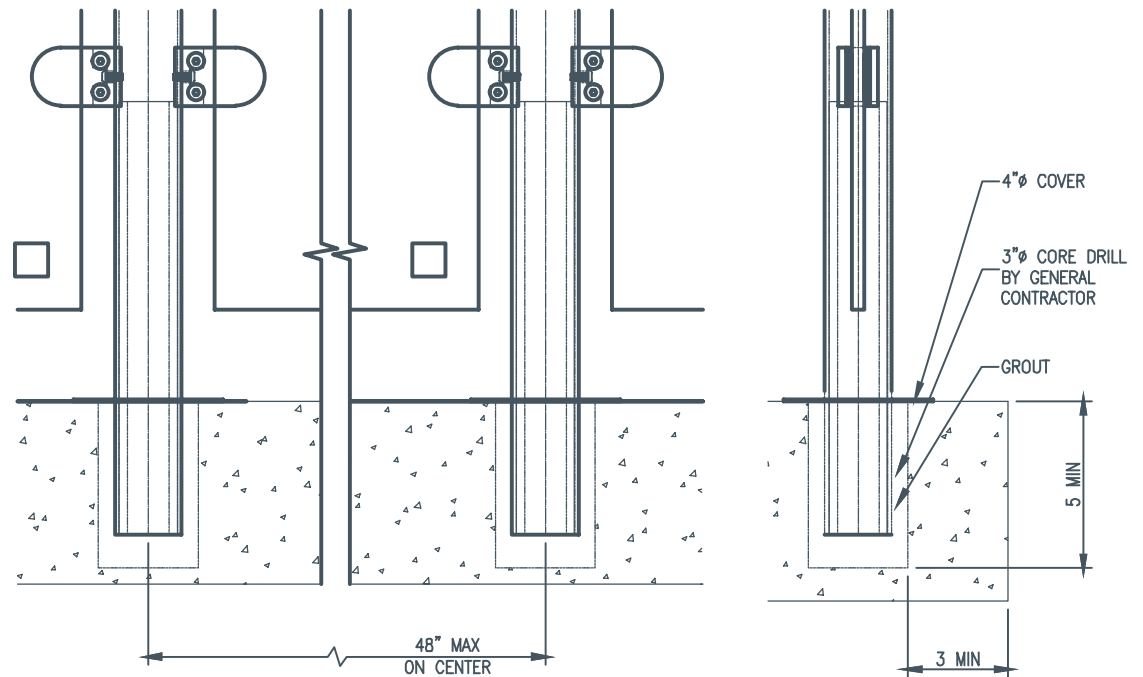
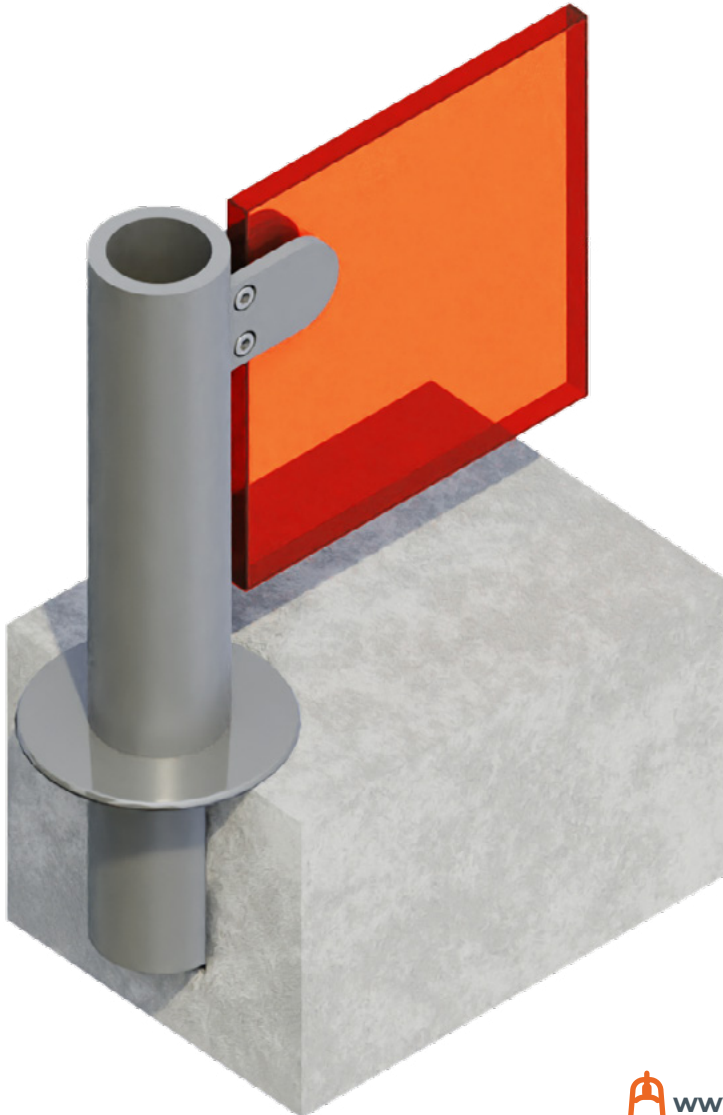
CONTENT

10

 **LIVERS**  
BRONZE

# Mirage Railing CORE-DRILLED

## CONCRETE



**CONTENT**



[www.liversbronze.com](http://www.liversbronze.com)



[Railings@LiversBronze.com](mailto:Railings@LiversBronze.com)



816-300-2828

# Mirage Railing

## TOP MOUNT TO CONCRETE

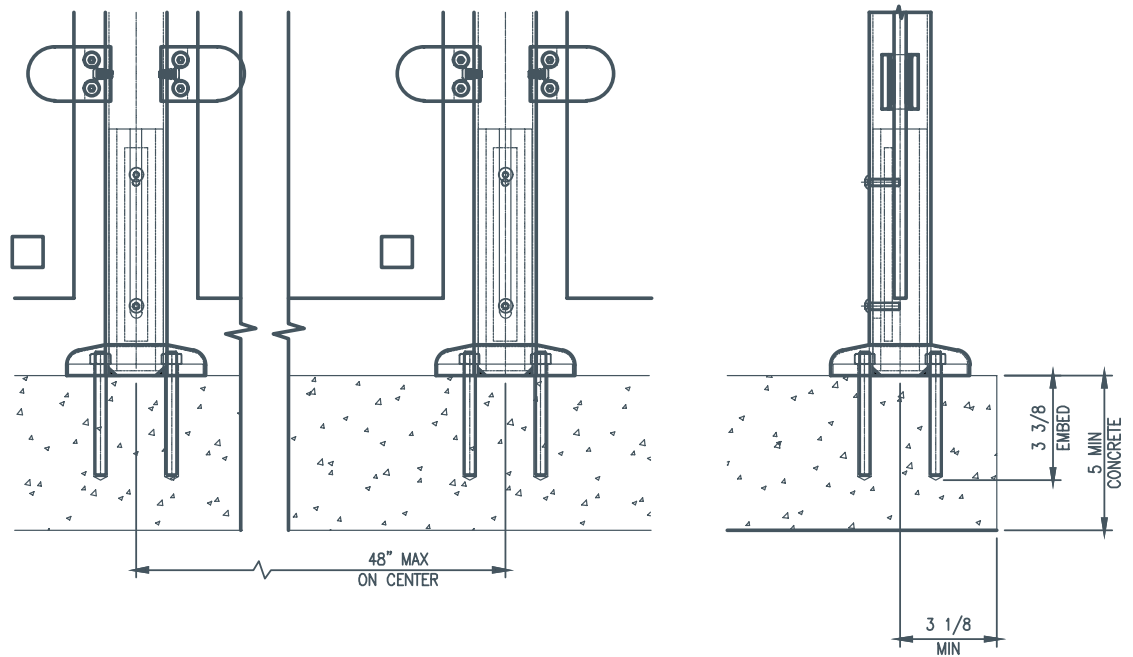
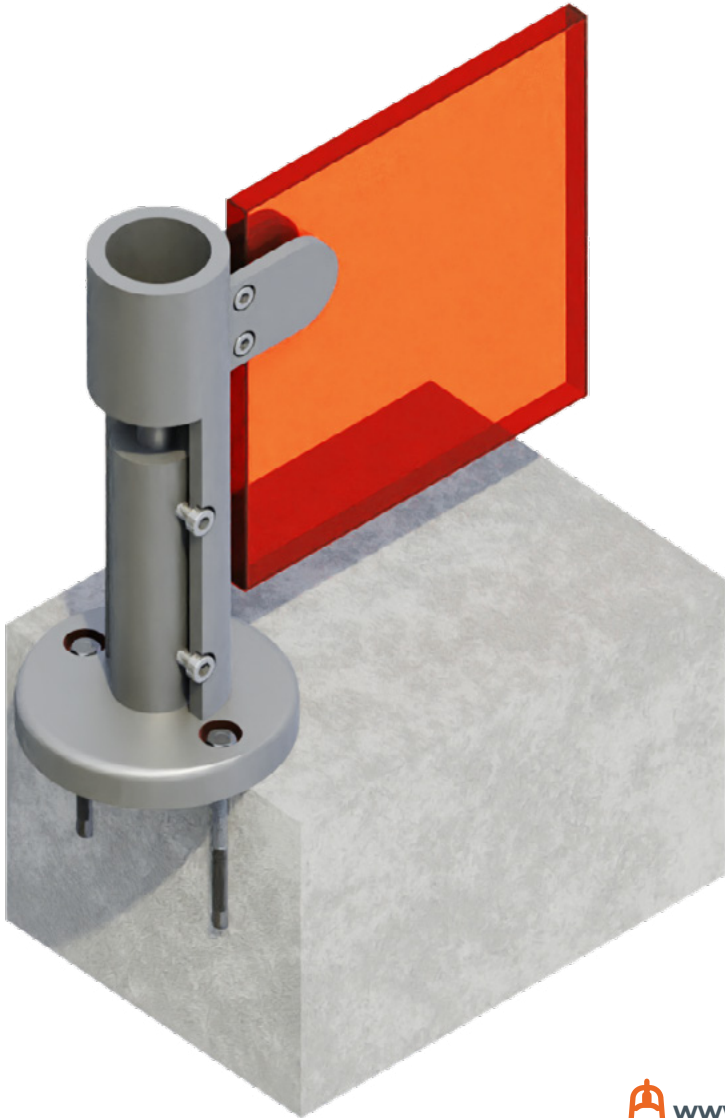
Lenexa, KS



CONTENT

12

 **LIVERS**  
BRONZE



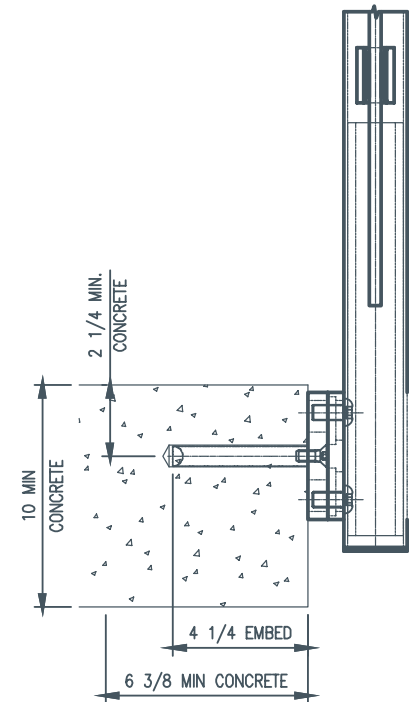
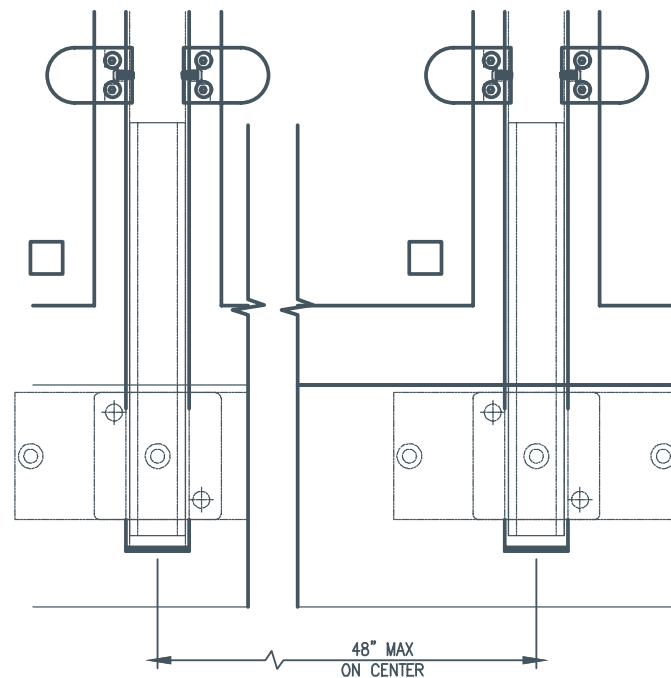
# Mirage Railing

## SIDE MOUNT TO CONCRETE

Toledo, OH



**TO CONCRETE**



Lubbock, Texas

# Mirage Railing

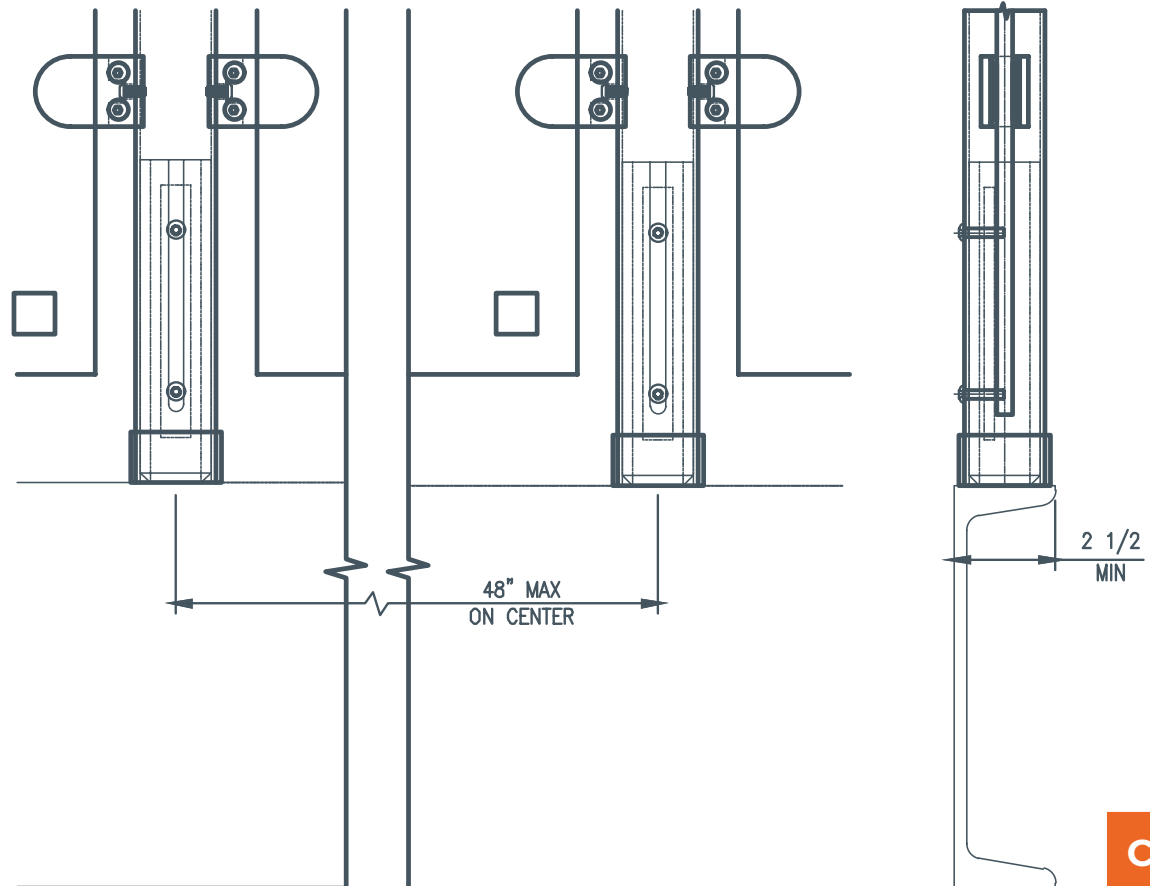
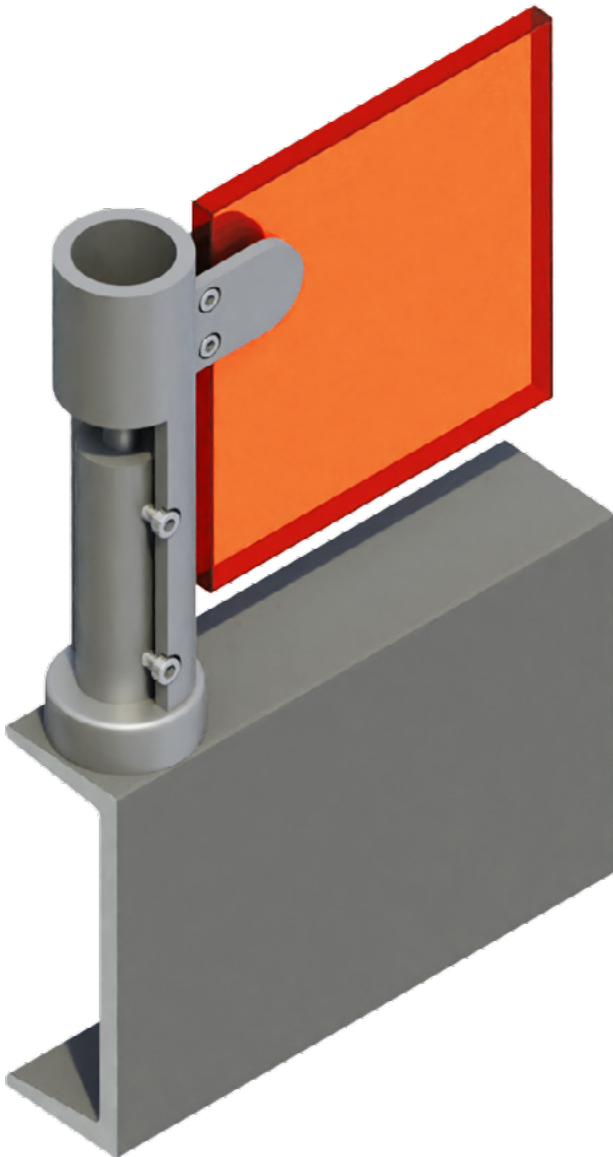
## TOP MOUNT TO STEEL



CONTENT

16

**LIVERS**  
BRONZE



# Mirage Railing

## SIDE MOUNT TO STEEL

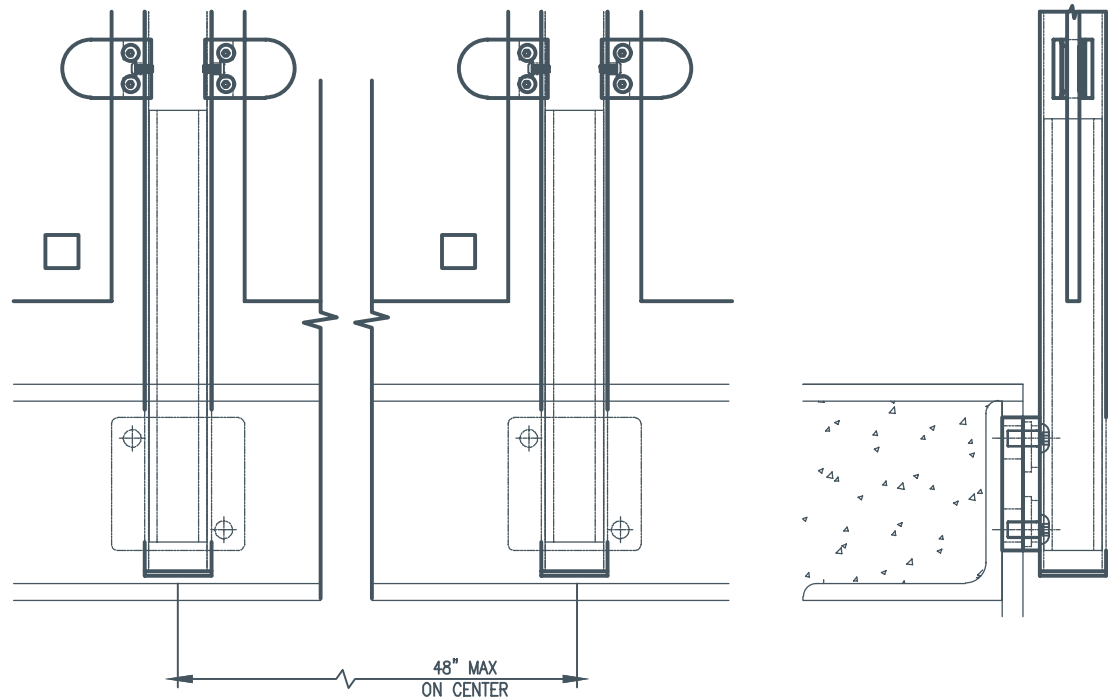
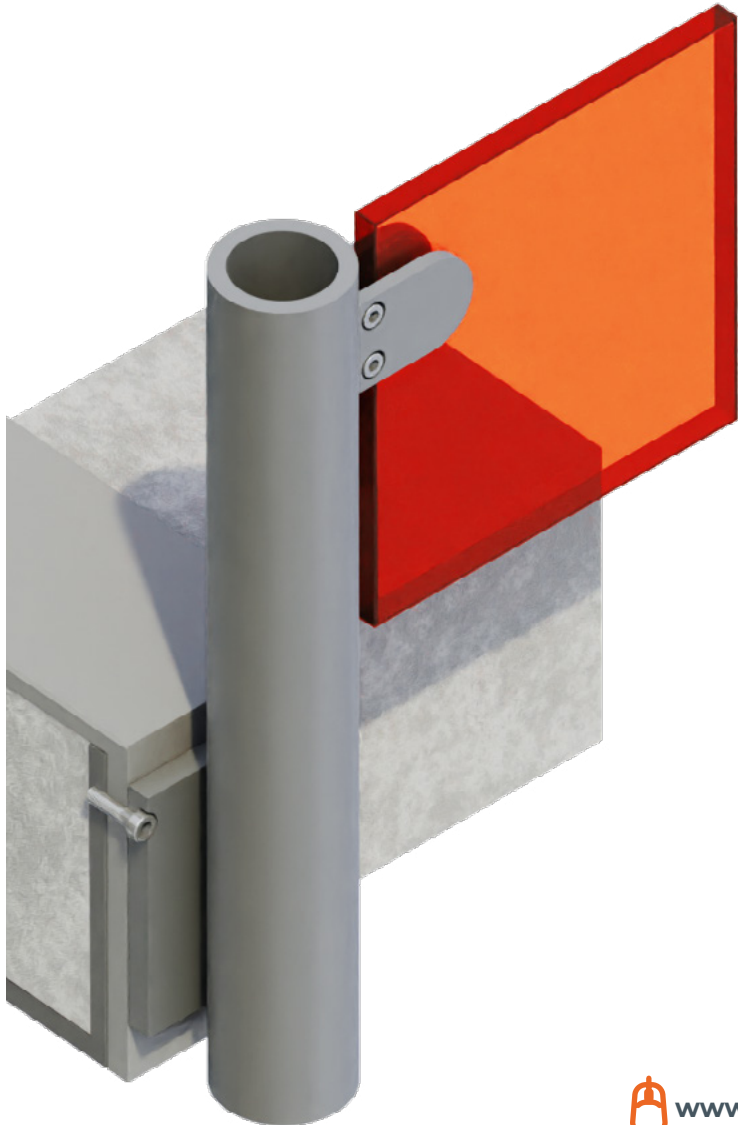
College Station, TX



CONTENT

18

**LIVERS**  
**BRONZE**



San Antonio, TX

## Mirage Railing

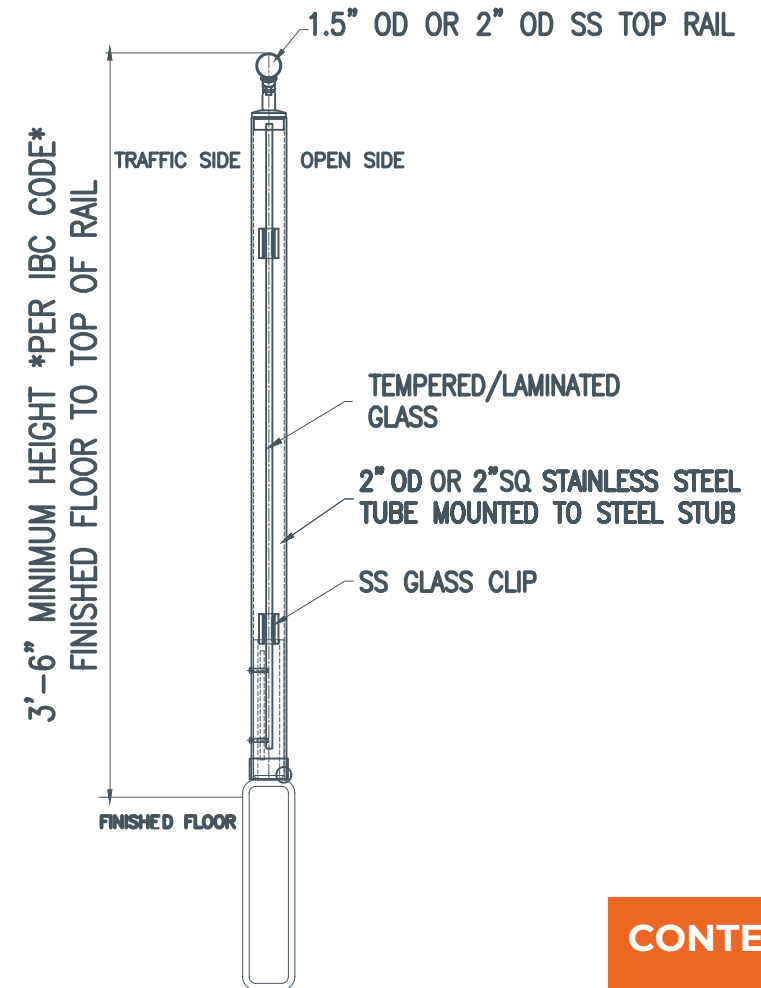
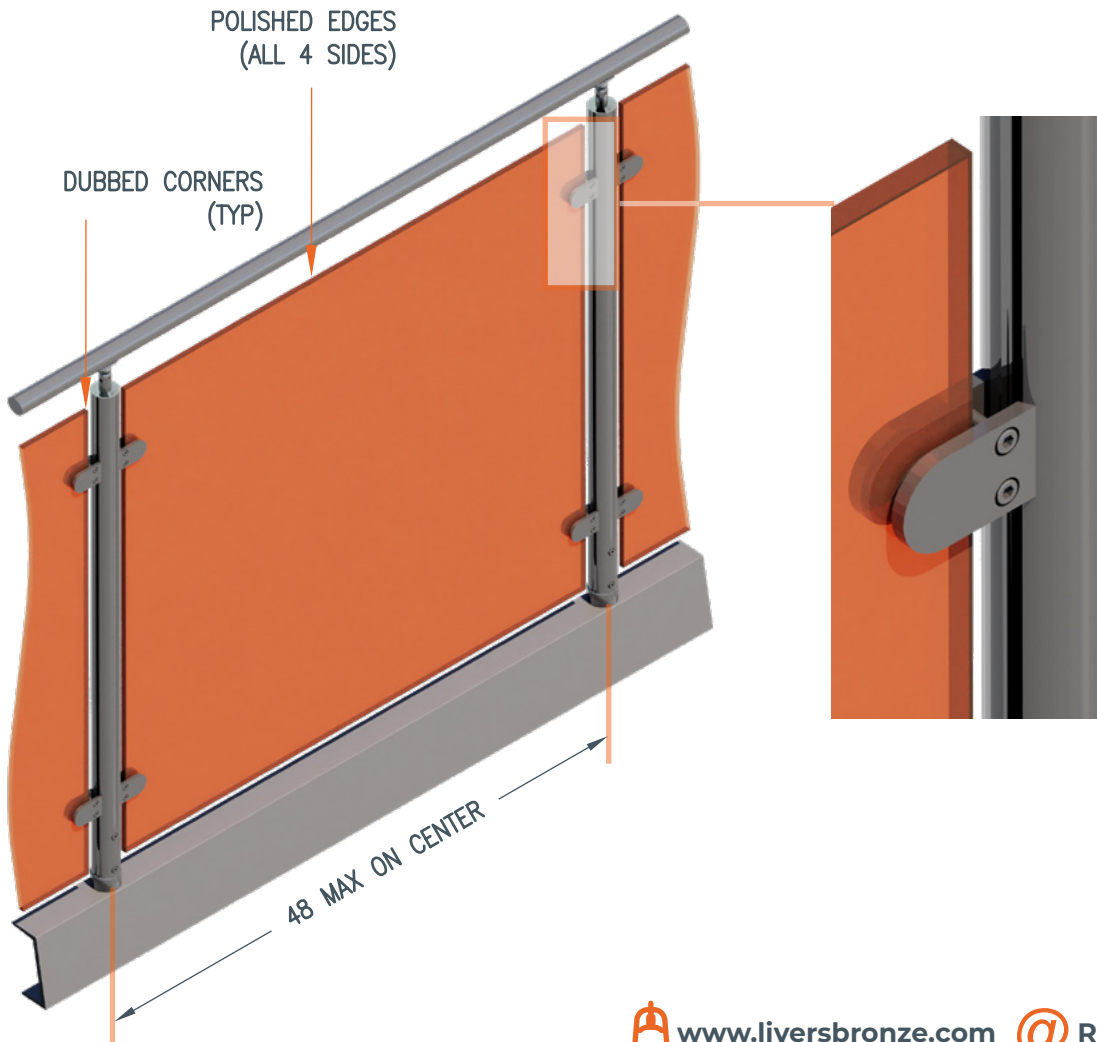
GLASS



CONTENT

20

**LIVERS**  
BRONZE



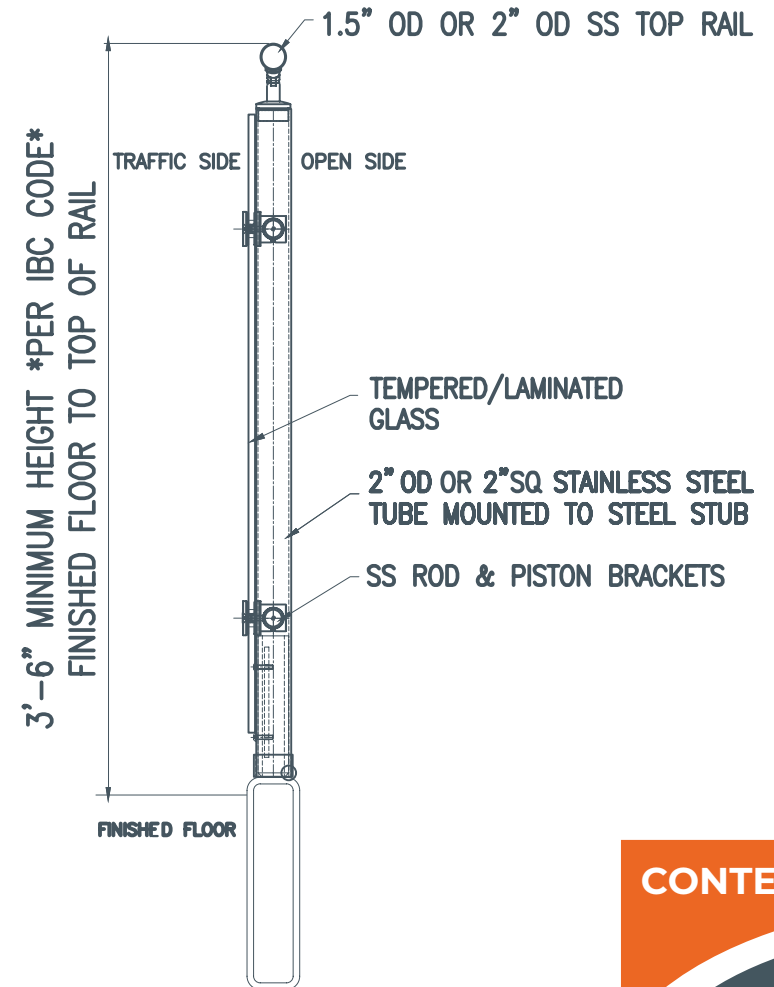
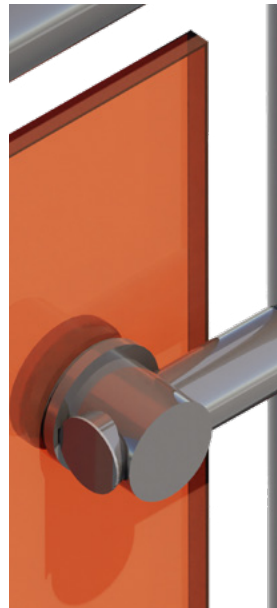
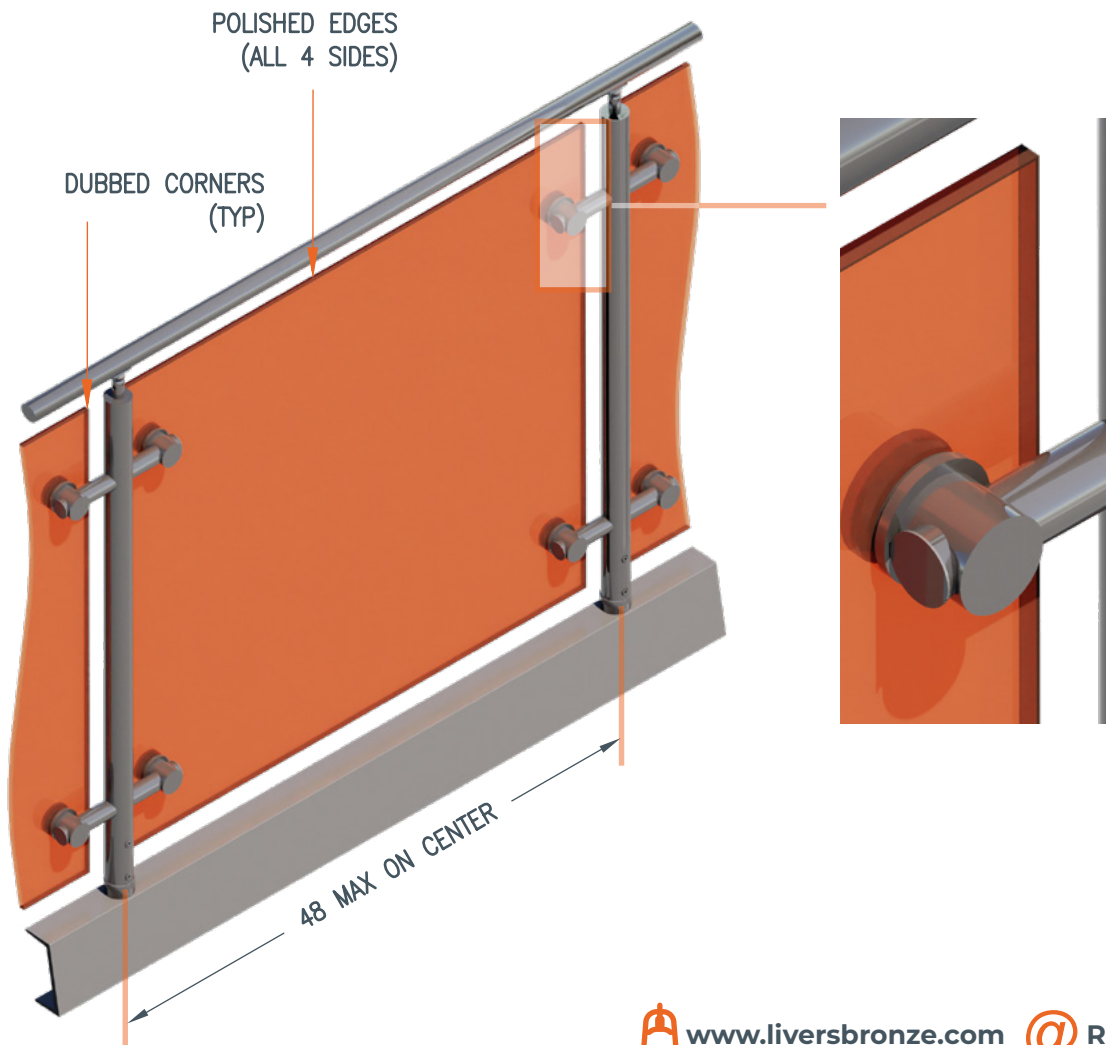
Las Vegas, Nevada

# Mirage Railing

## GLASS ROD & PISTON



# ROD & PISTON

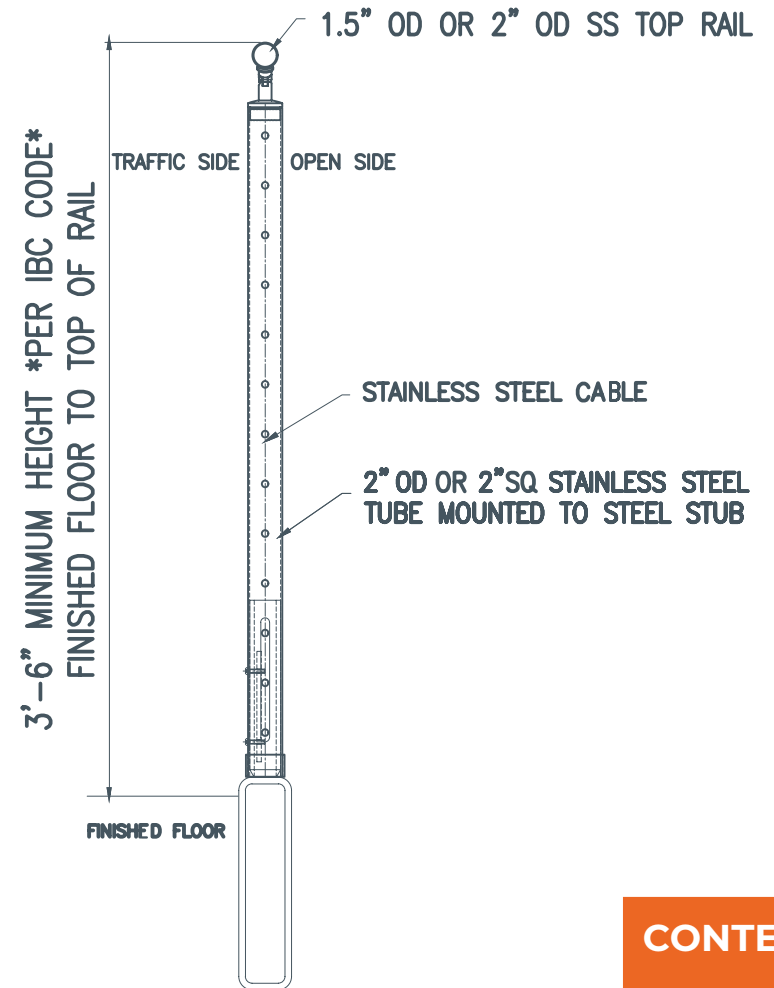
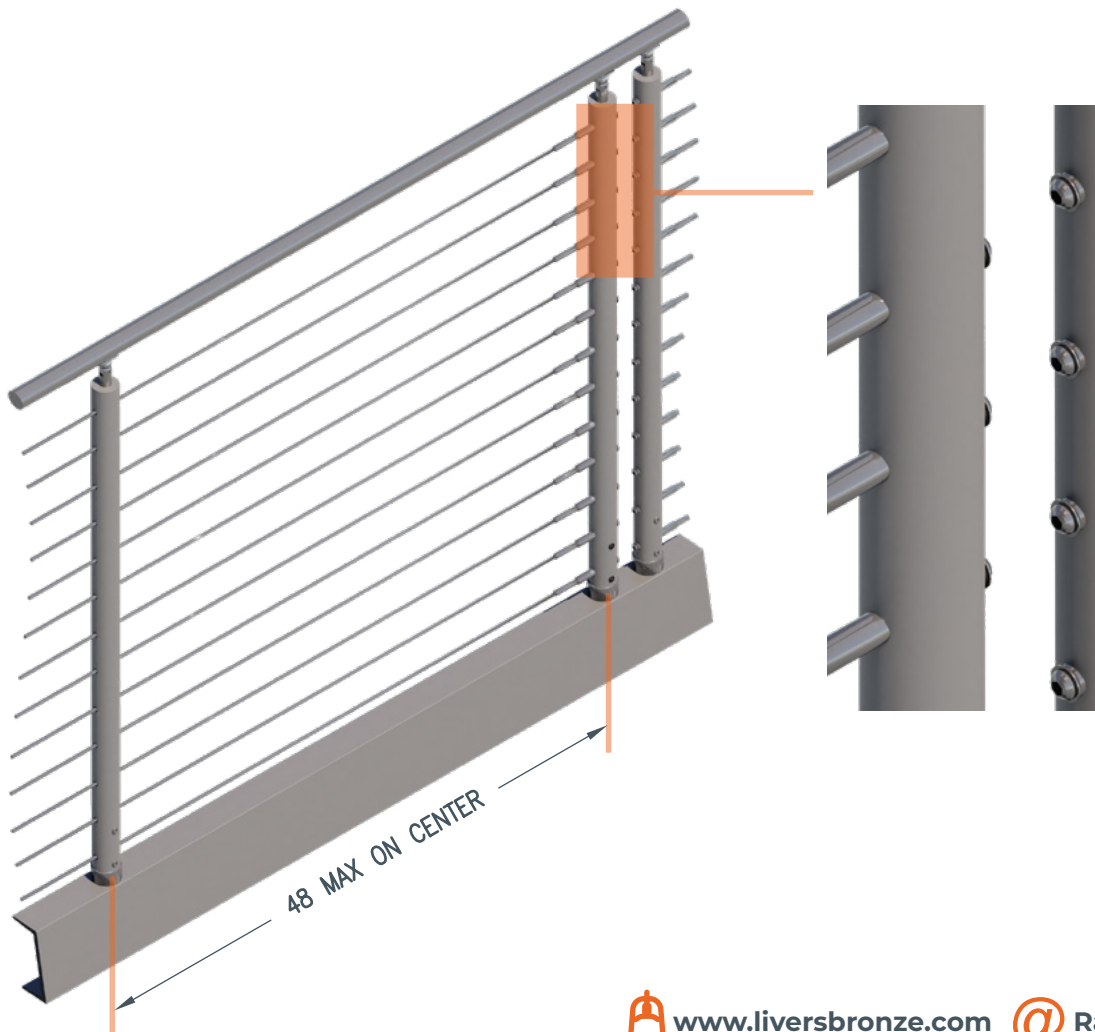


Belton, Texas

# Mirage Railing

CABLE

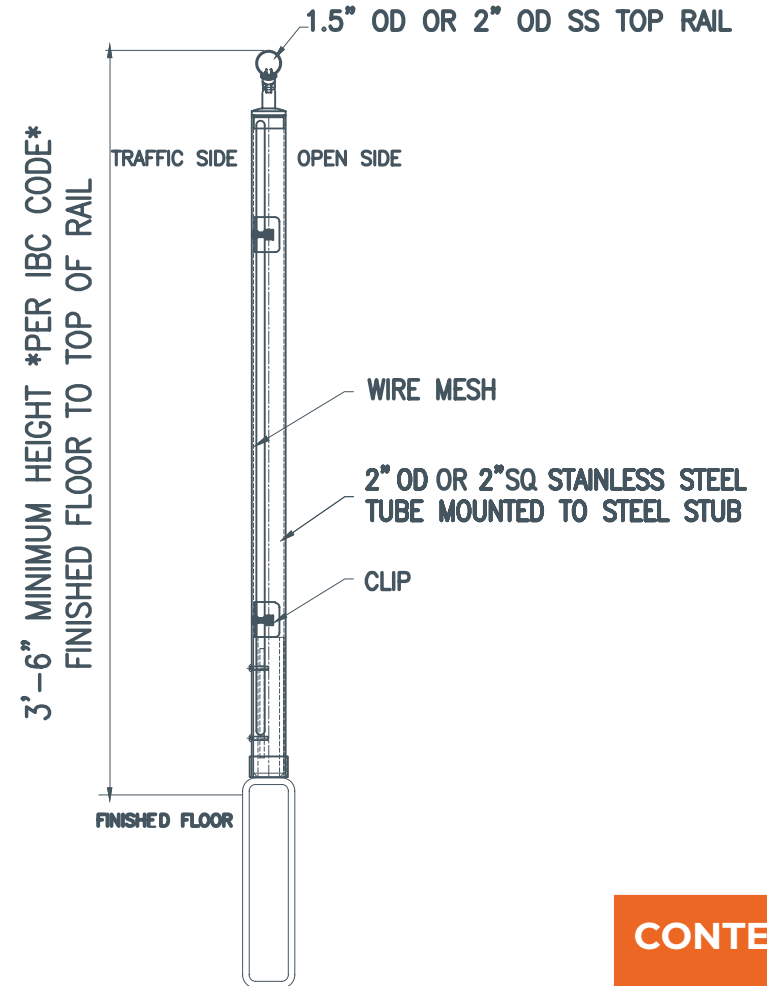
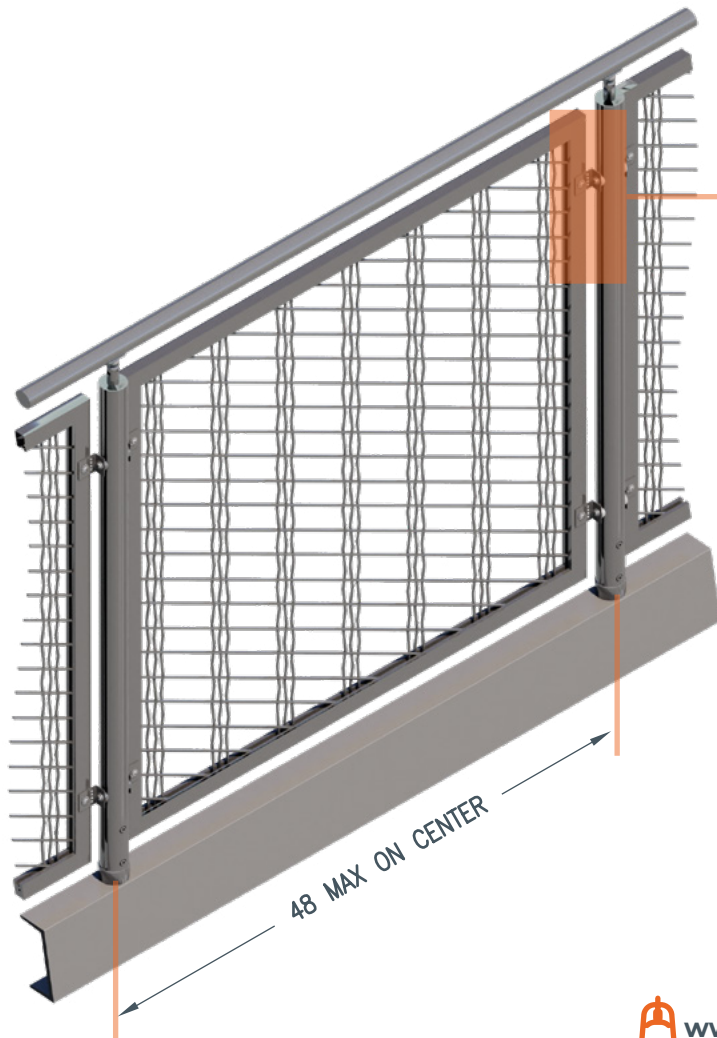




# Mirage Railing

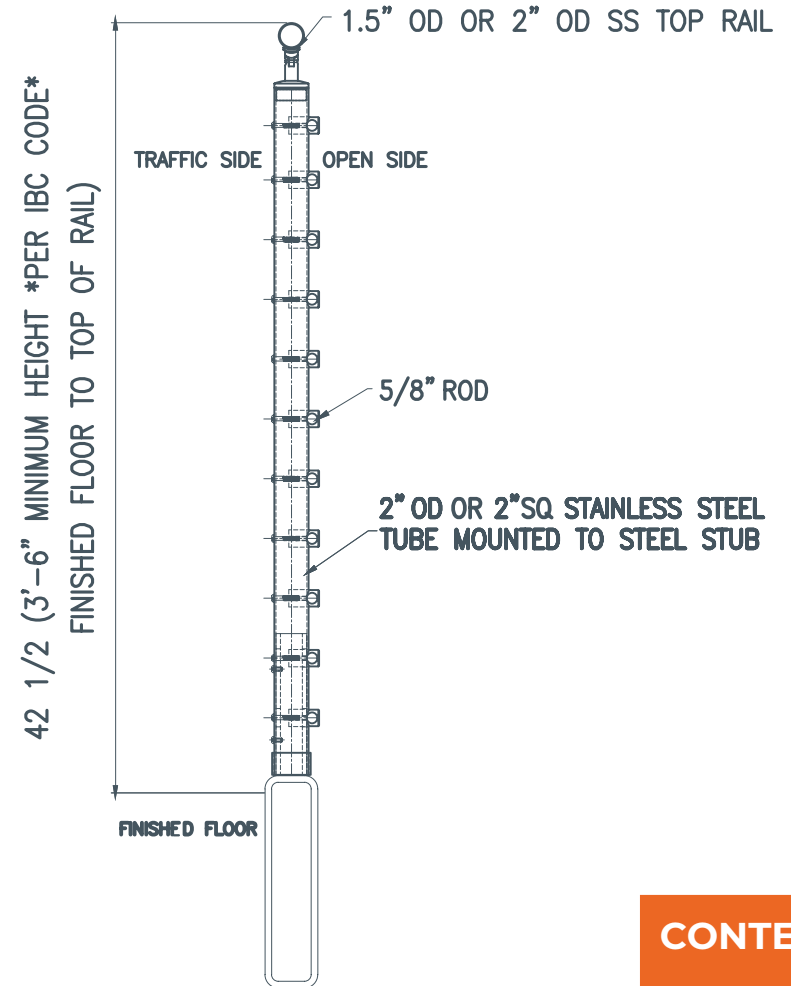
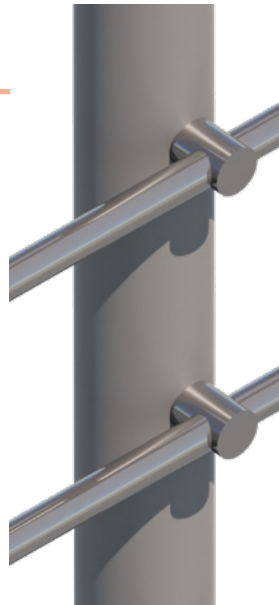
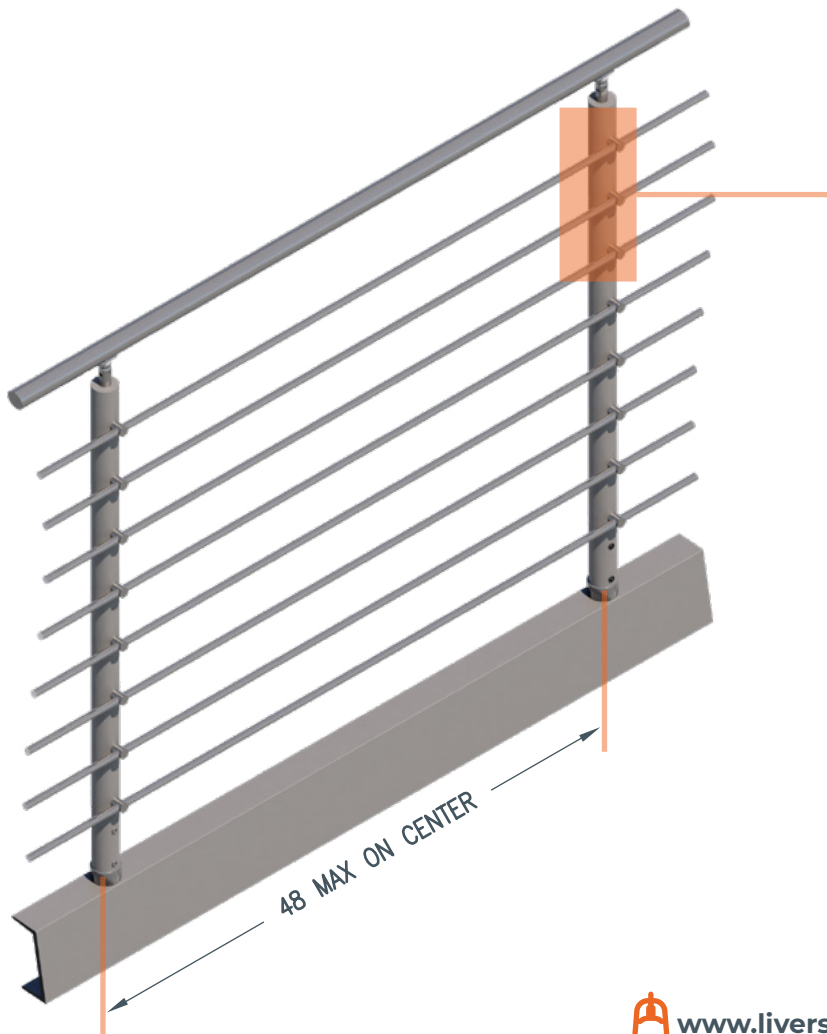
## WIRE MESH





# Mirage Railing ROD (HORIZONTAL)

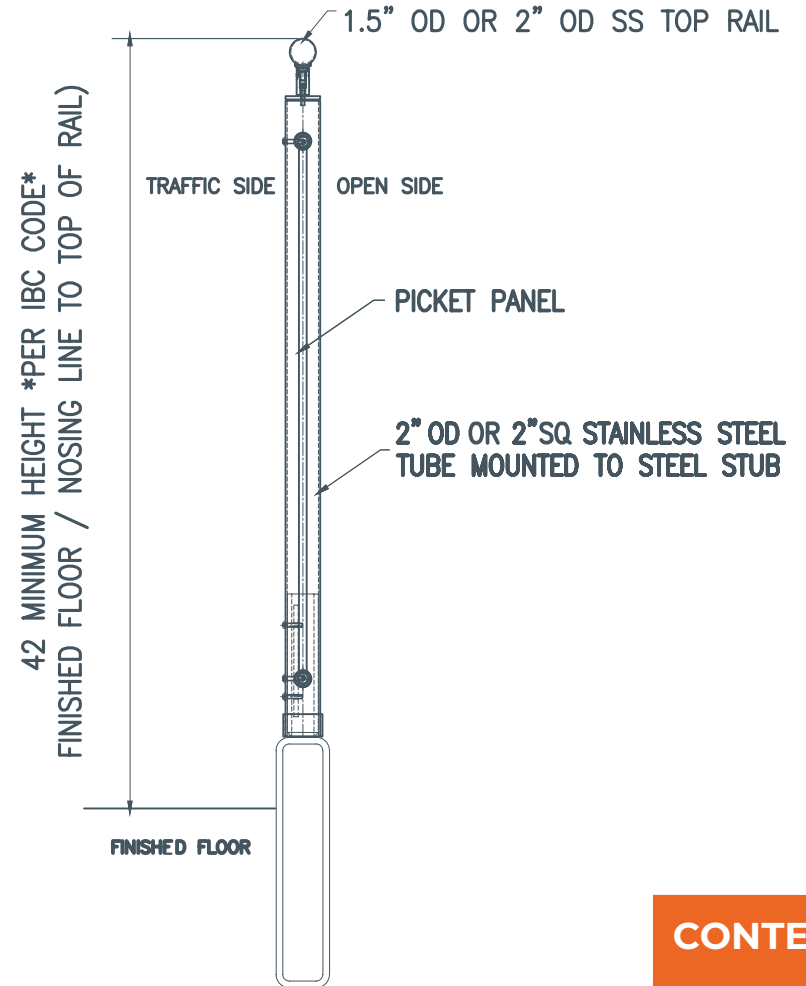
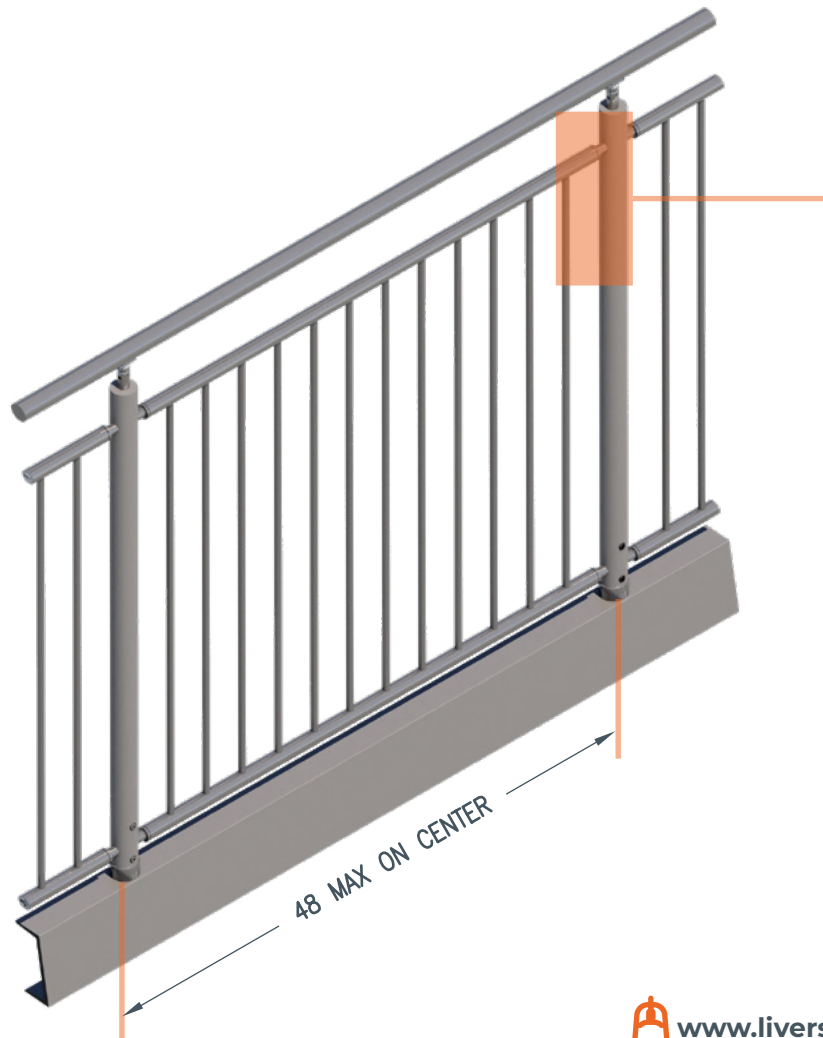




# Mirage Railing

## ROD (VERTICAL)

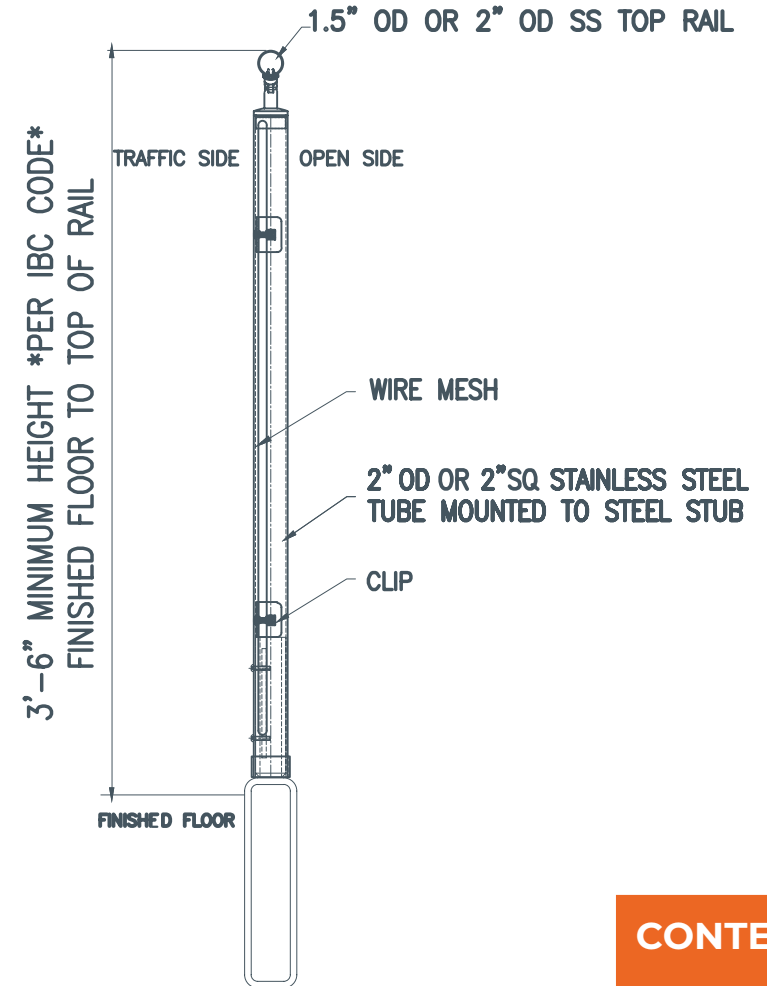
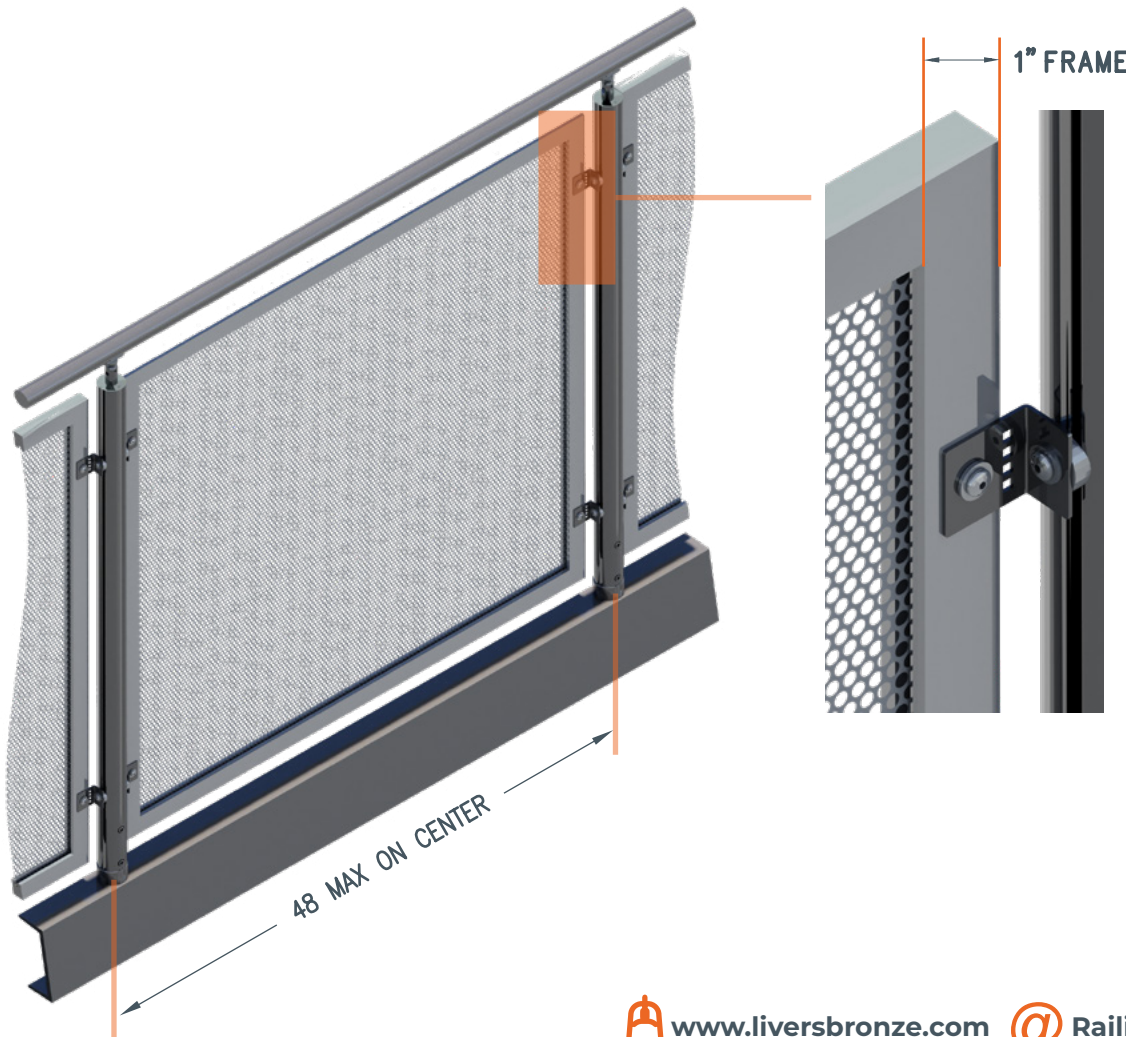




# Mirage Railing

# PERF-PANEL







## PRODUCT DESCRIPTION

# AUXILLARY RAILINGS

Livers Bronze Single Line Railings and Wall Mounted Railings are the obvious companions to any project. Available in all metals and finishes these railings are fabricated to perfectly match the companion railing system. Multiple mounting options for both interior and exterior applications make these railings useful and required throughout your project. To push these railings to another level consider using Livers Bronze ILLUME LED railings – you can customize the layout any way that suits your project requirements. All Livers Bronze railings are made in the USA from the industry leader with over 75 years of experience.

Free standing, Wall mounted, Loop railings, Step railings, Site railings, Single line railings, ramp railings, ADA railings, Cane railings and Double line railings are all available.



CONTENT



[www.liversbronze.com](http://www.liversbronze.com)



[Railings@LiversBronze.com](mailto:Railings@LiversBronze.com)



816-300-2828

# PRODUCT DESCRIPTION

# LED RAILINGS



What makes LED railings from Livers Bronze truly exceptional is their adaptability to all Livers Bronze railing systems. Whether these railings are freestanding, wall mounted or attached to another Livers Bronze Railing system - the LED railing can be effortlessly integrated. This seamless compatibility ensures that you can maintain design consistency throughout your project while enjoying the benefits of energy-efficient LED lighting. LED railings from Livers Bronze are available in linear form or individual puck lighting along with multiple beam spreads and color temperatures. For more information contact Livers Bronze – the specialist in all things railing.



[www.liversbronze.com](http://www.liversbronze.com)



[Railings@LiversBronze.com](mailto:Railings@LiversBronze.com)



816-300-2828

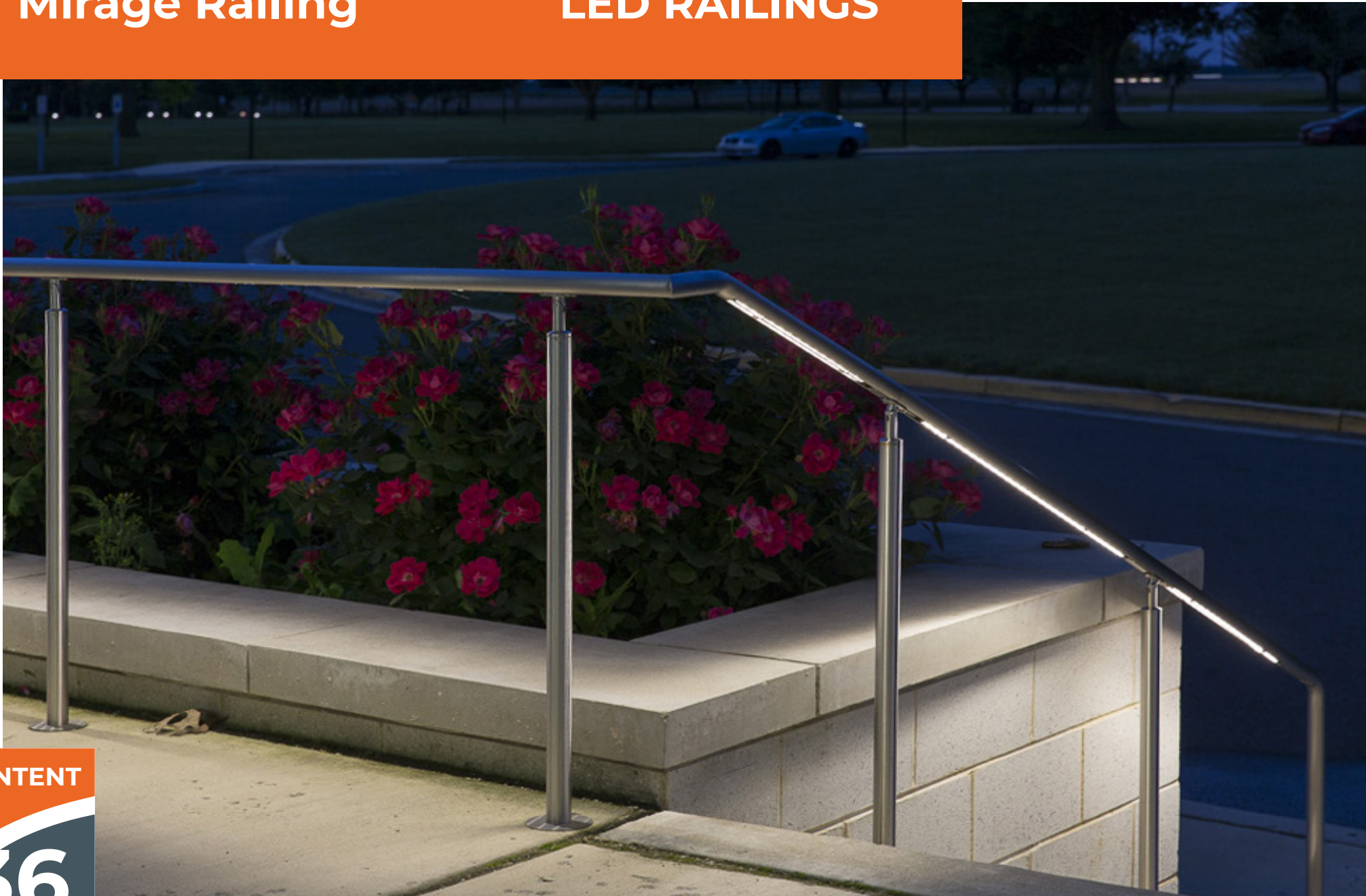
CONTENT

35

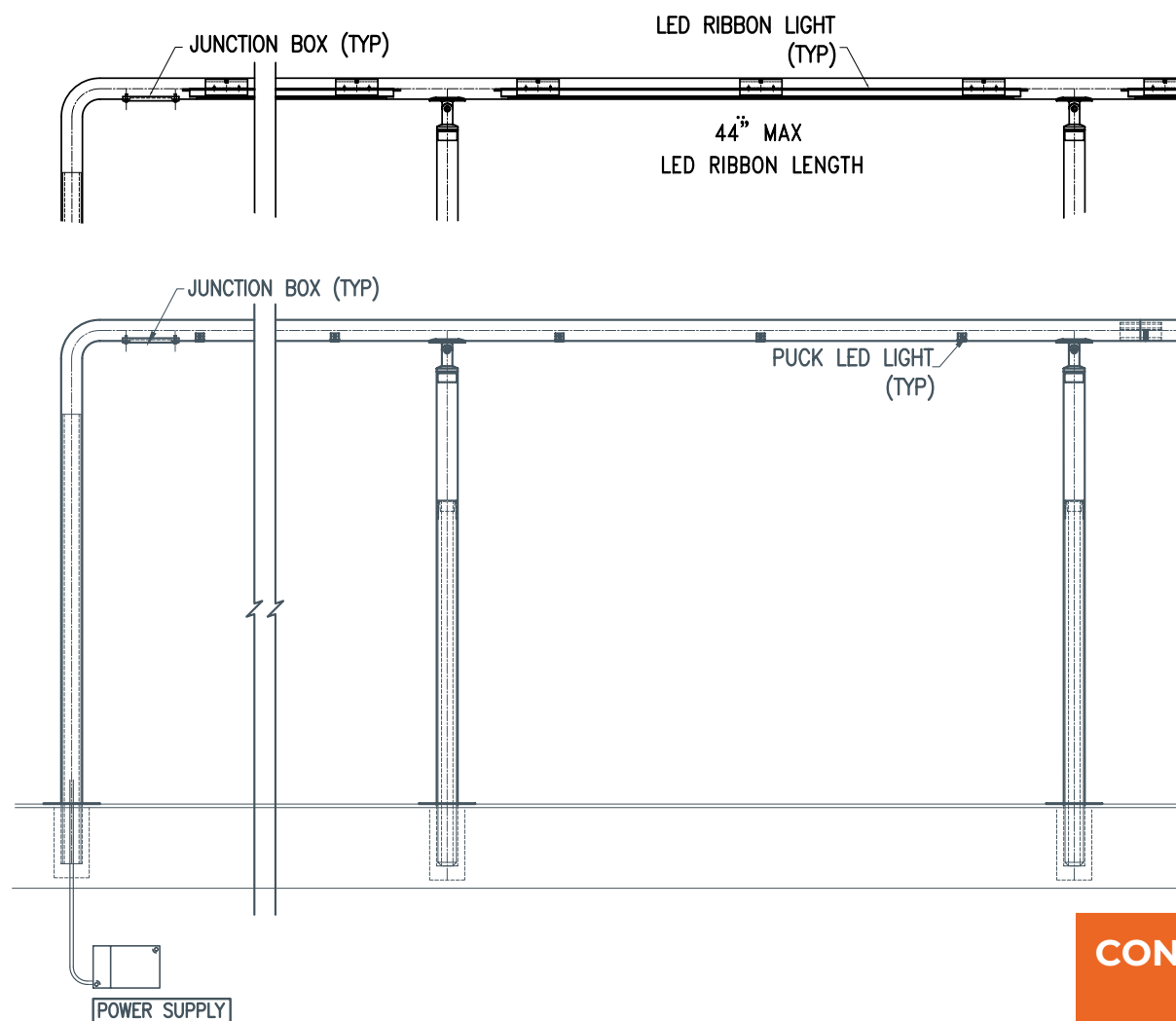
Austin, Texas

Mirage Railing

LED RAILINGS



# Mirage Railing LED RAILINGS





## MIRAGE SYSTEM

### Livers Bronze LLC

4621 East 75th Terrace  
Kansas City, MO 64132

**Phone:** 816-300-2828

[www.liversbronze.com](http://www.liversbronze.com)

